

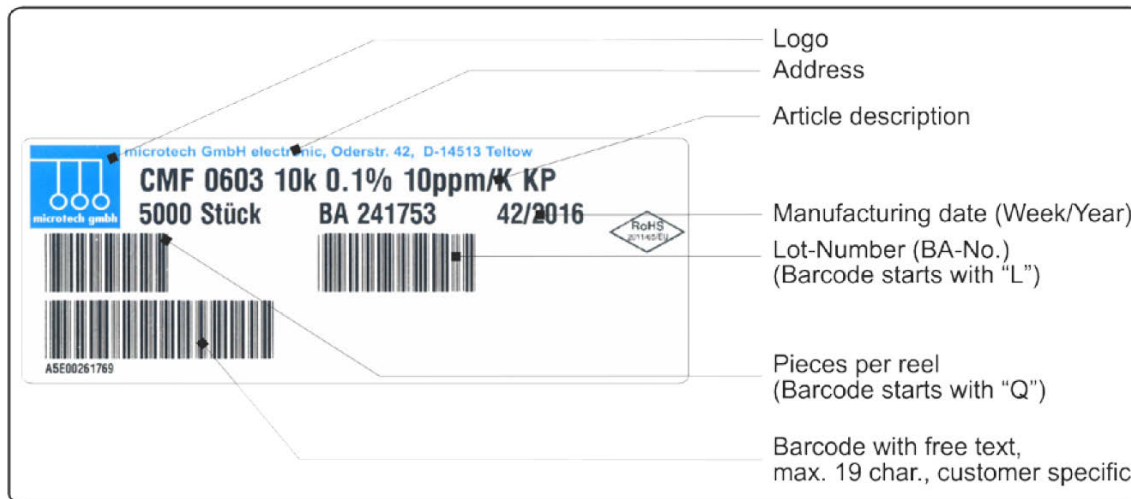
Labeling:

Our taped components will be delivered on reels without packaging around as standard. Each reel contains a label as standard as shown at the picture below.

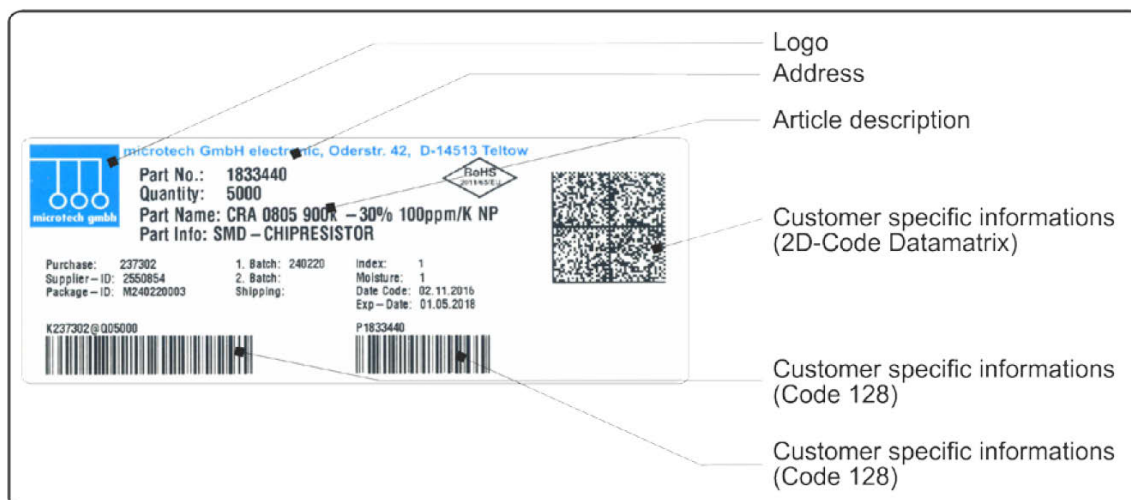
The computerized processing of supplier data by the customer is guaranteed by the using of barcodes. As standard we are using Code 39 with high-density resolution. On customer request we can realize customer specific layouts, other barcode types (acc. industrial standard), other resolutions (up to 300dpi) or other label dimensions.

With your order you can specify a custom string (max. 19 characters) for each ordering position, which will be printed by us at the (standard-)label as an extra barcode field.

Layout of standard label:



Example for a customer specific label containing barcodes of type Code 128 and Datamatrix:



Dimensions (W x H): 102mm x 38mm